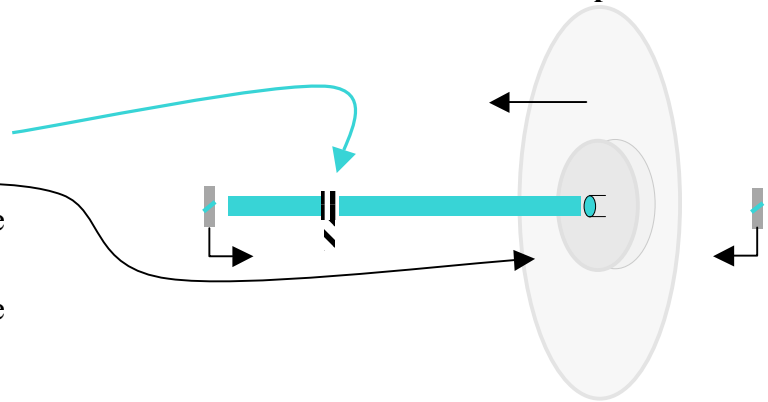


1 – Assemble the Rear Axle and drive wheel

- Wind the **WIRE** around the axle a few times.
- Twist together and tighten with pliers
- Slide **CD** with hub onto axle – to middle
- Slide 1 **LOCK WASHER** onto each side of axle

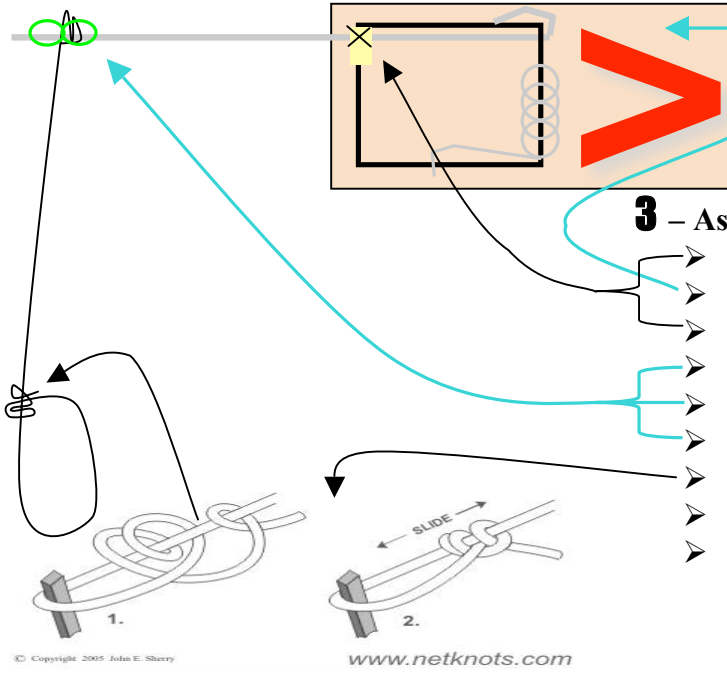


2 – Assemble the Front Axle

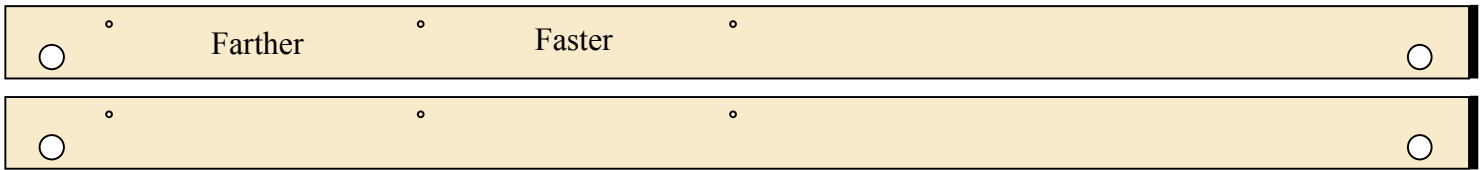
- Slide 2 **LOCK WASHER** onto each side of axle
- Set both axles aside for now

3 – Assemble the “Motor”

- Wrap the **TAPE** around the snapper as shown
- Slide **LEVER** under the rod and snapper/tape and **hook**
- Wrap **Bagie Tie** around the snapper and lever as shown
- Take small **ELASTIC** and wrap it at the end of the lever
- Tie the **THREAD** to the end of the Lever
- Wrap **ELASTIC** around the other side of the thread
- Tie a **Tautline Hitch** on the other end of the **THREAD**
- The length of the looped thread should be tip to rear axle
- Crimp the **LEVER** hook tighter.



Rear of Rail painted **BLACK**



4 – Assemble the “Mousetrap Car”

- Motor placement – Farther **Front** / Faster **Middle**
- Use 2 **Screws**, Attach **Motor** to **Side Rail**, V pointing toward rear
- Insert axle/wheel assemblies into axle holes
- Use 2 **Screws**, Attach other **Side Rail**

